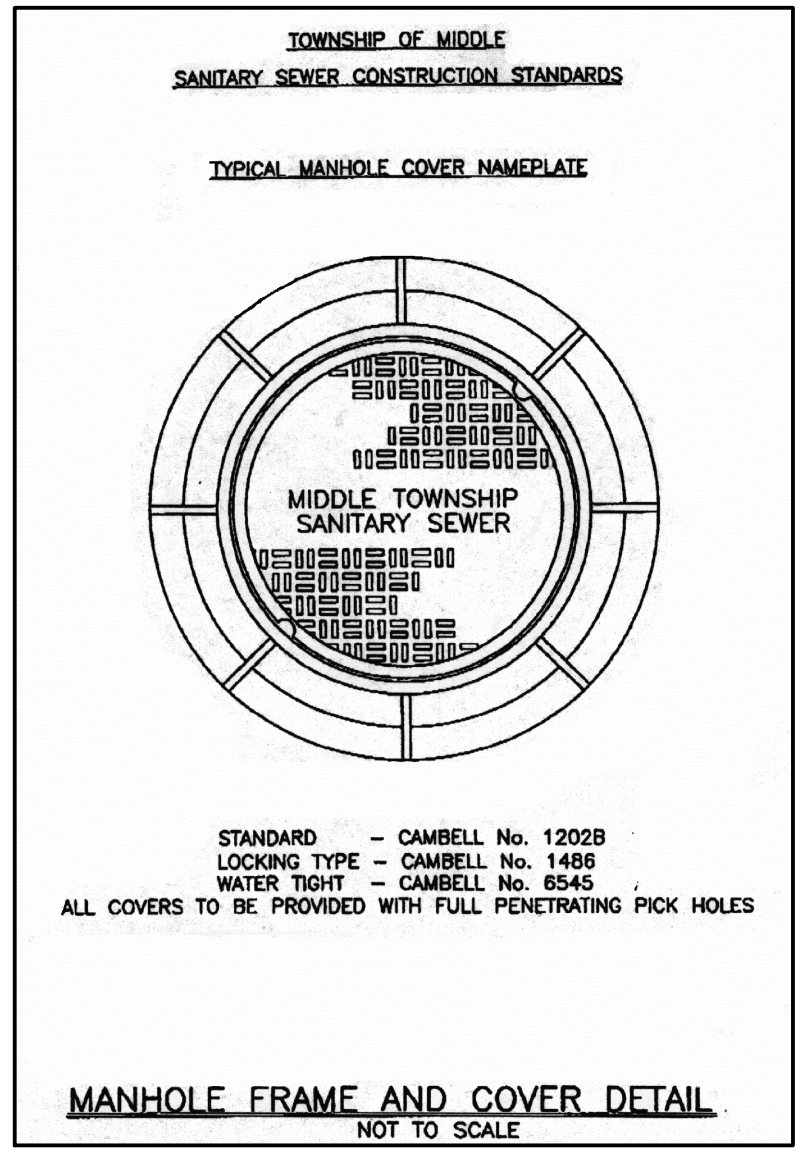
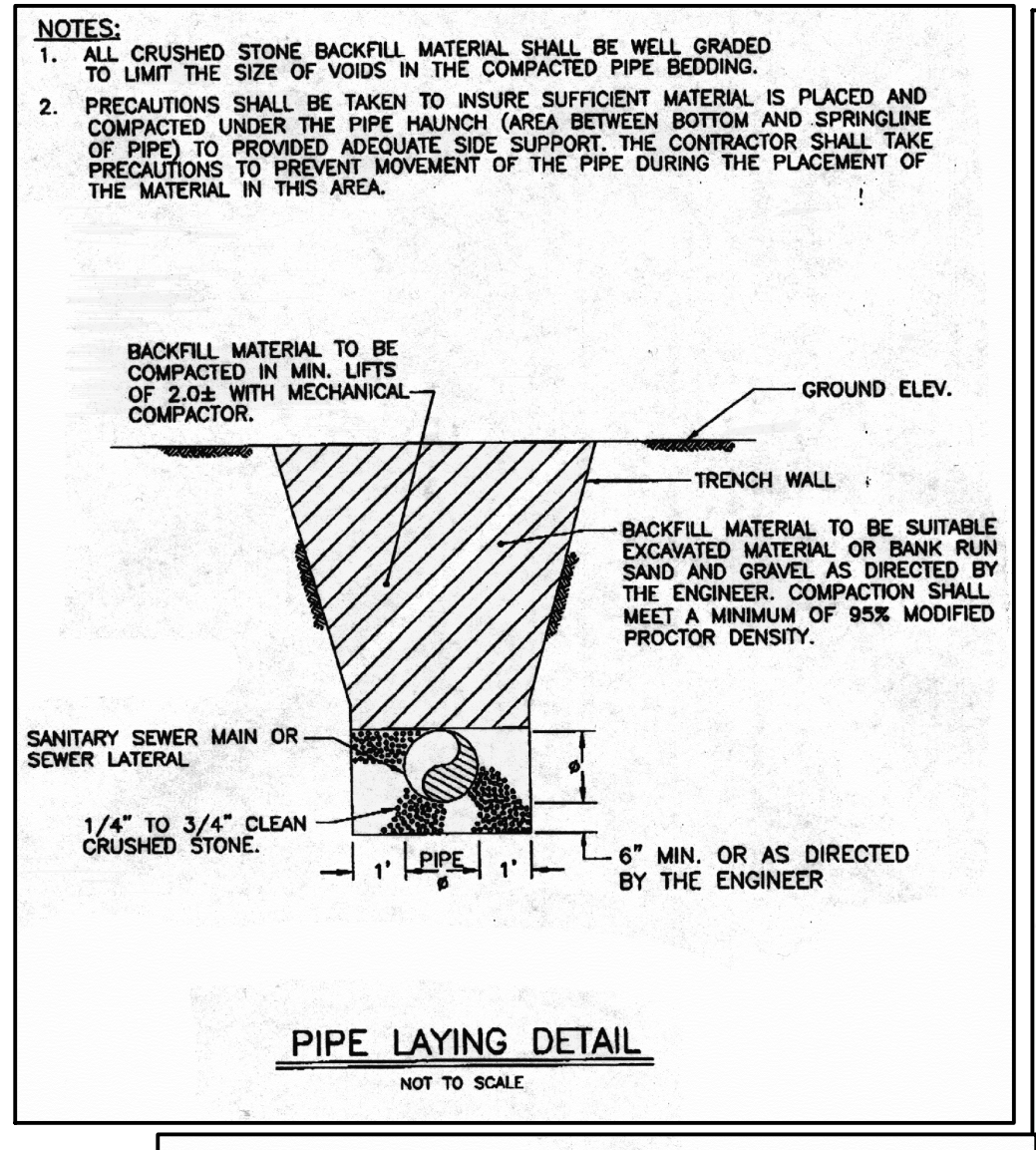


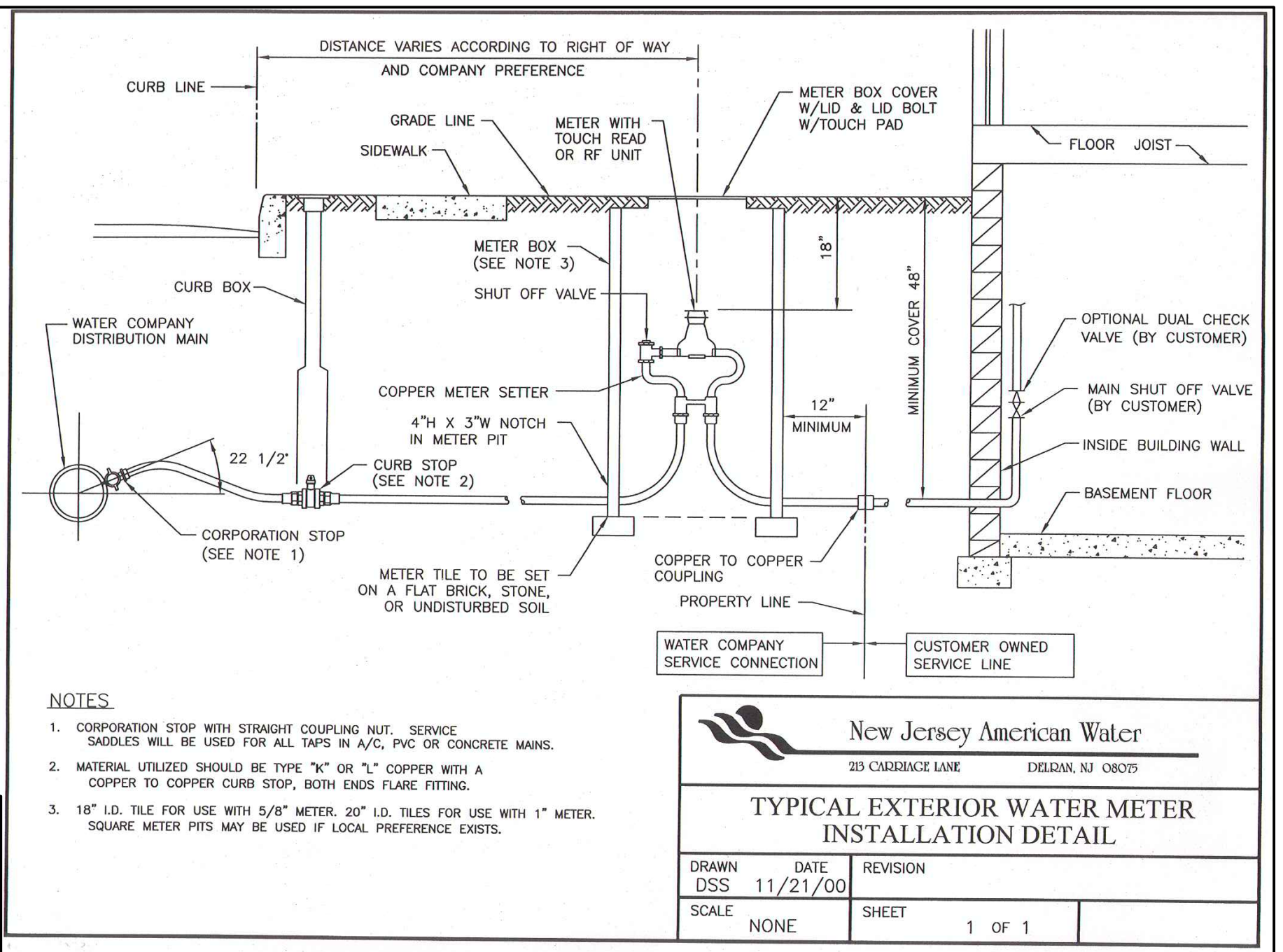
**Typical Fire Hydrant**  
NOT TO SCALE



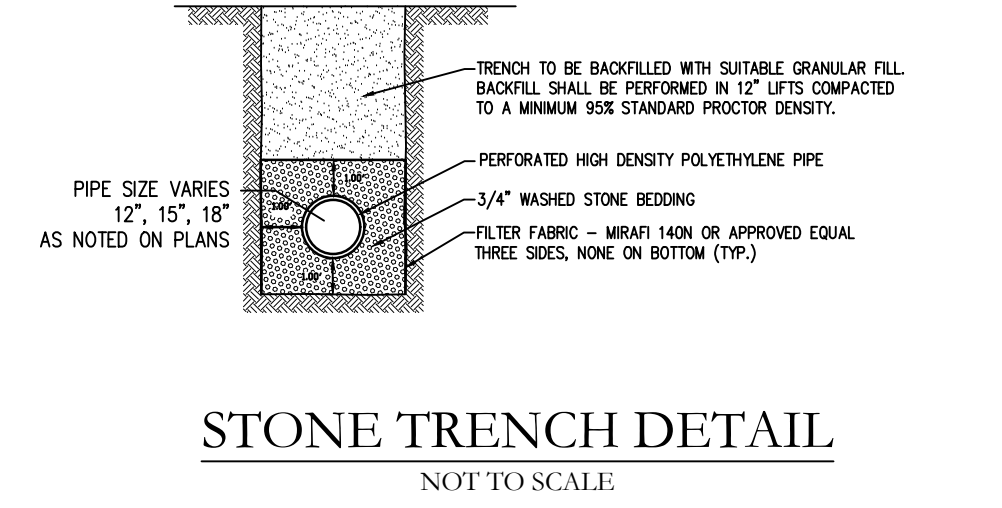
**MANHOLE FRAME AND COVER DETAIL**  
NOT TO SCALE



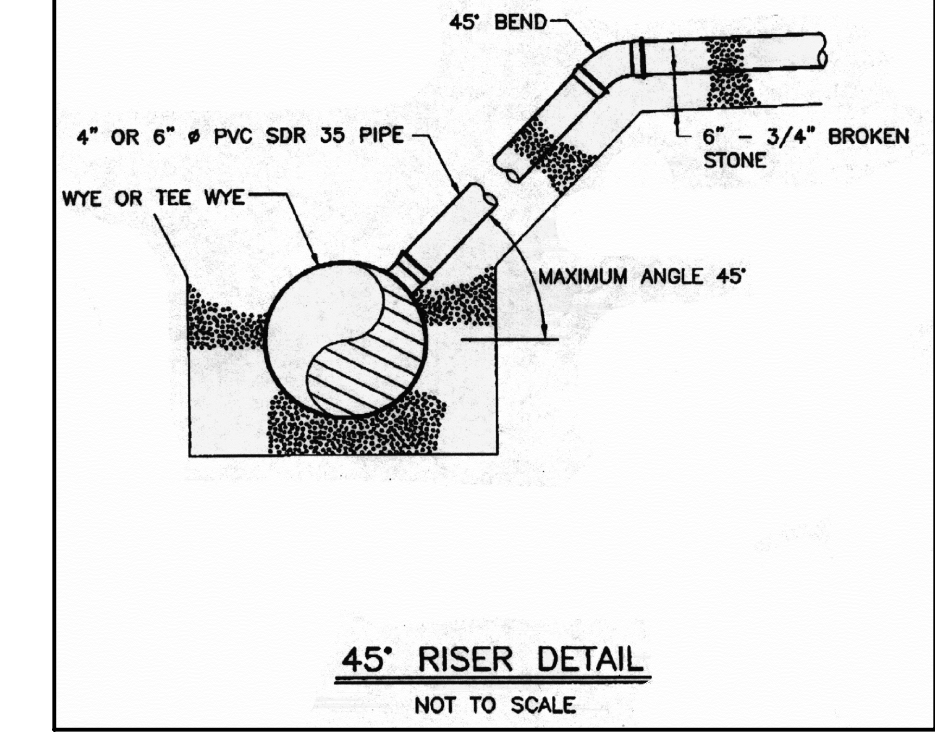
**PIPE LAYING DETAIL**  
NOT TO SCALE



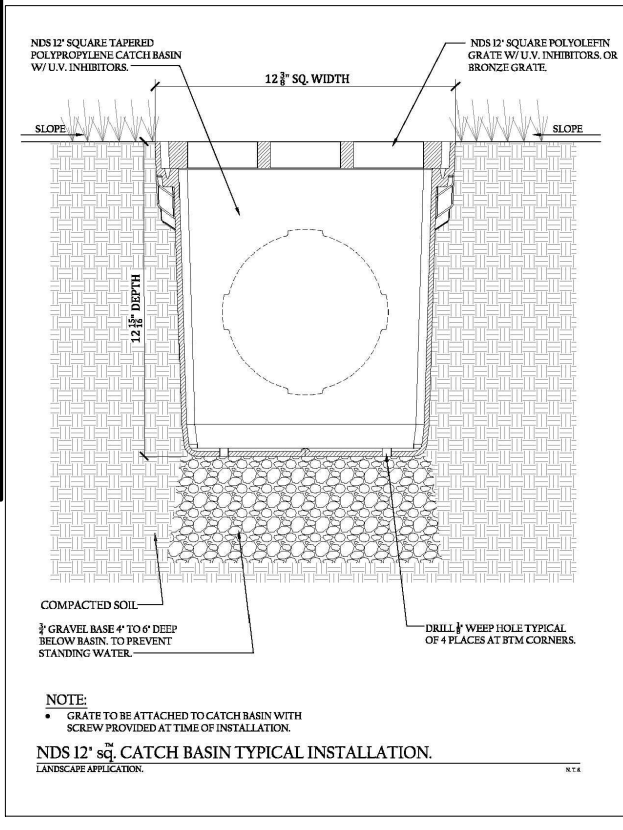
**TYPICAL EXTERIOR WATER METER INSTALLATION DETAIL**



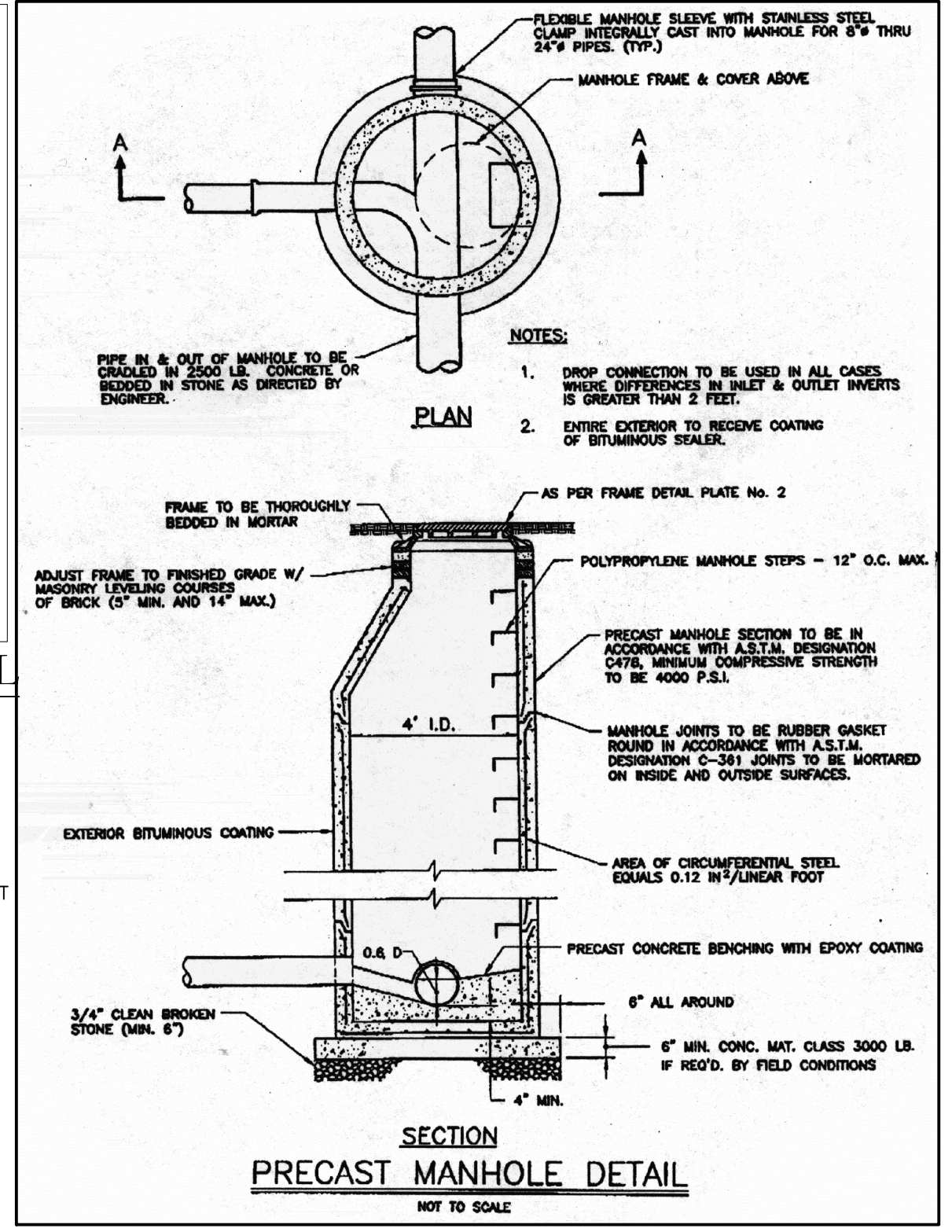
**STONE TRENCH DETAIL**  
NOT TO SCALE



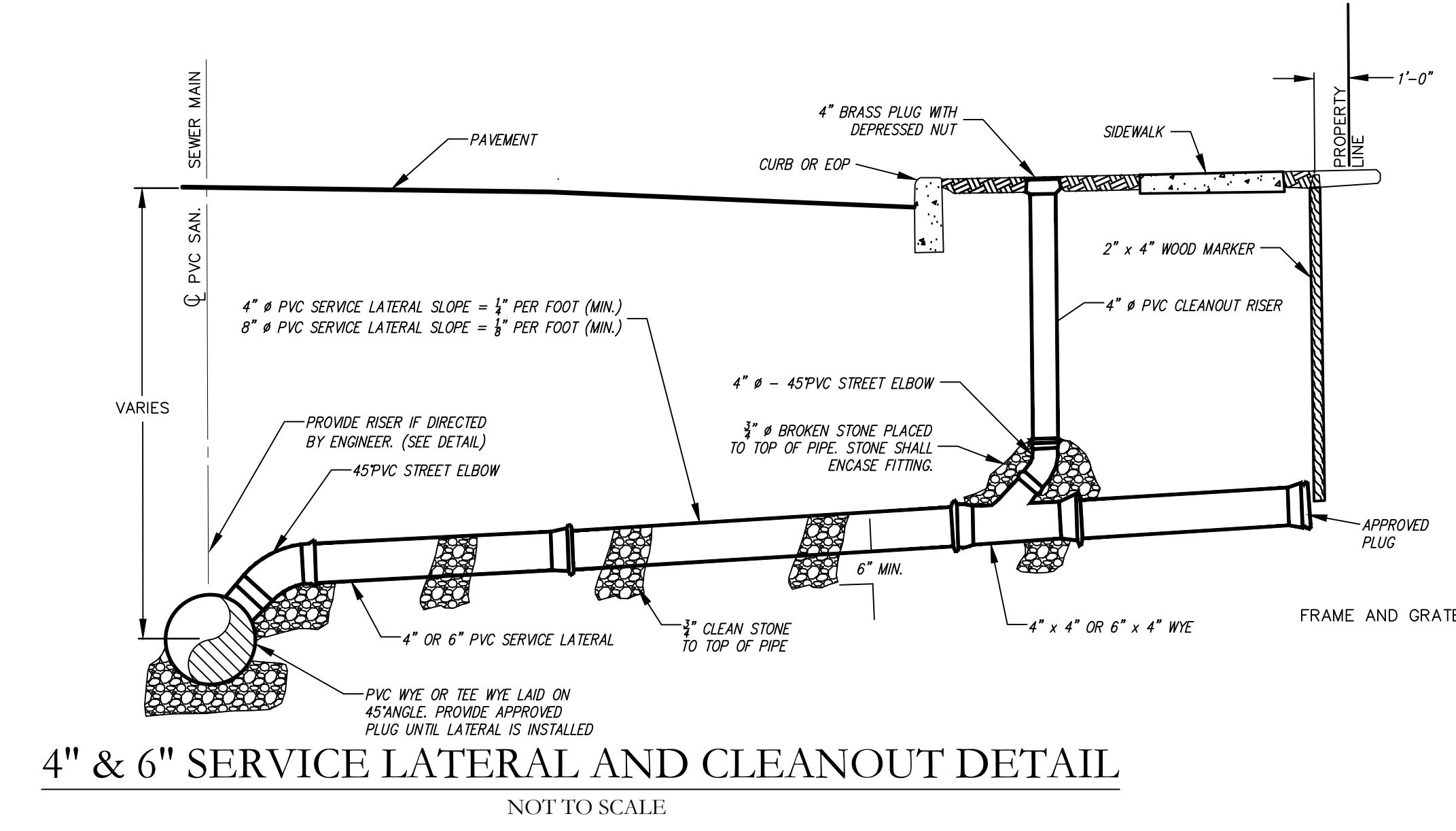
**45° RISER DETAIL**  
NOT TO SCALE



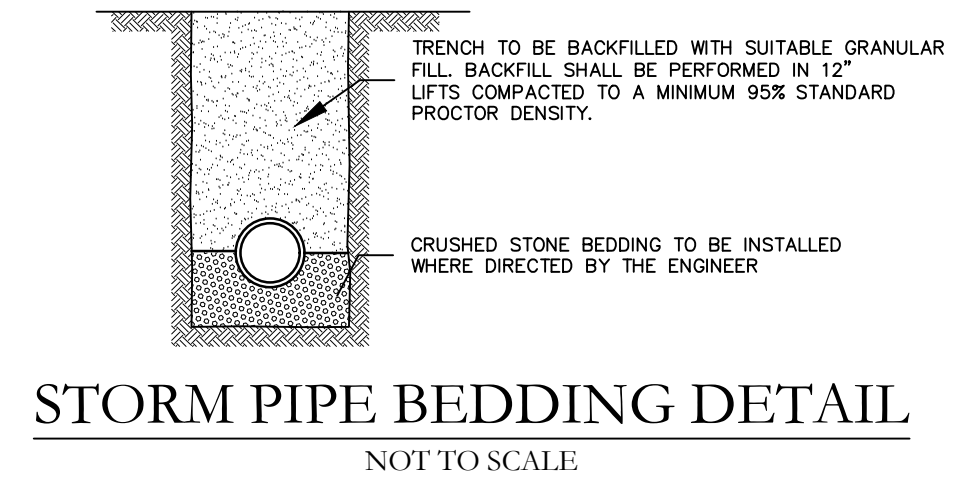
**YARD DRAIN DETAIL**  
NOT TO SCALE



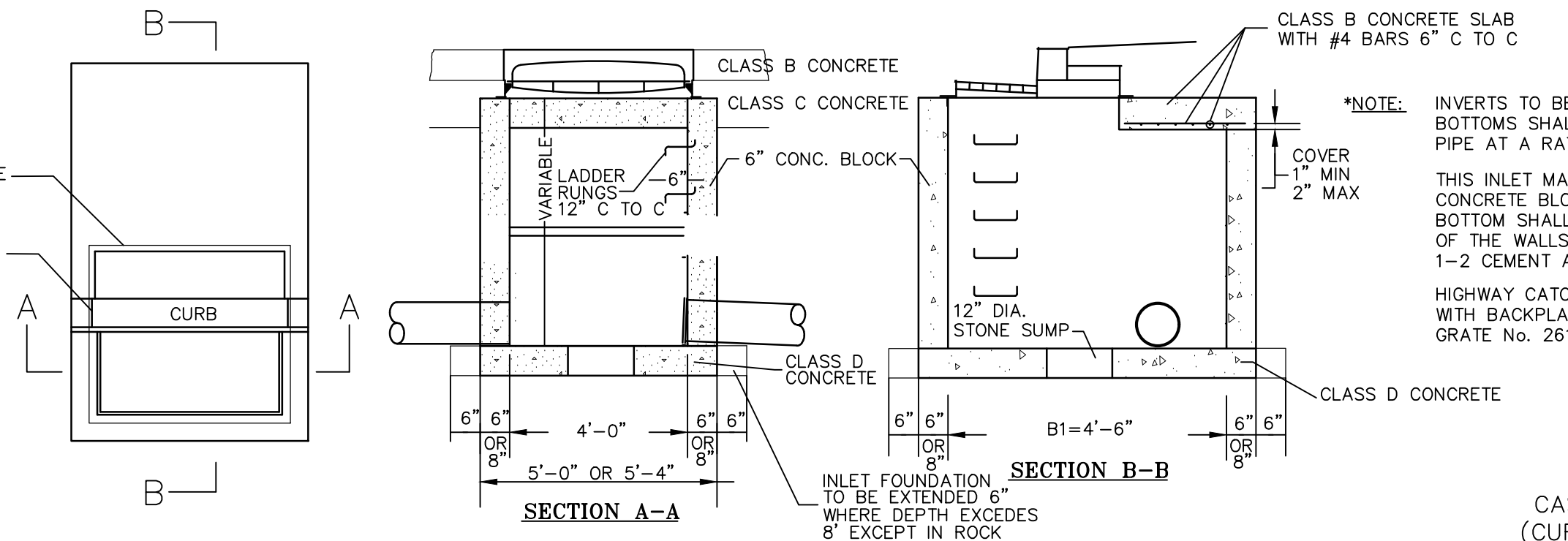
**PRECAST MANHOLE DETAIL**  
NOT TO SCALE



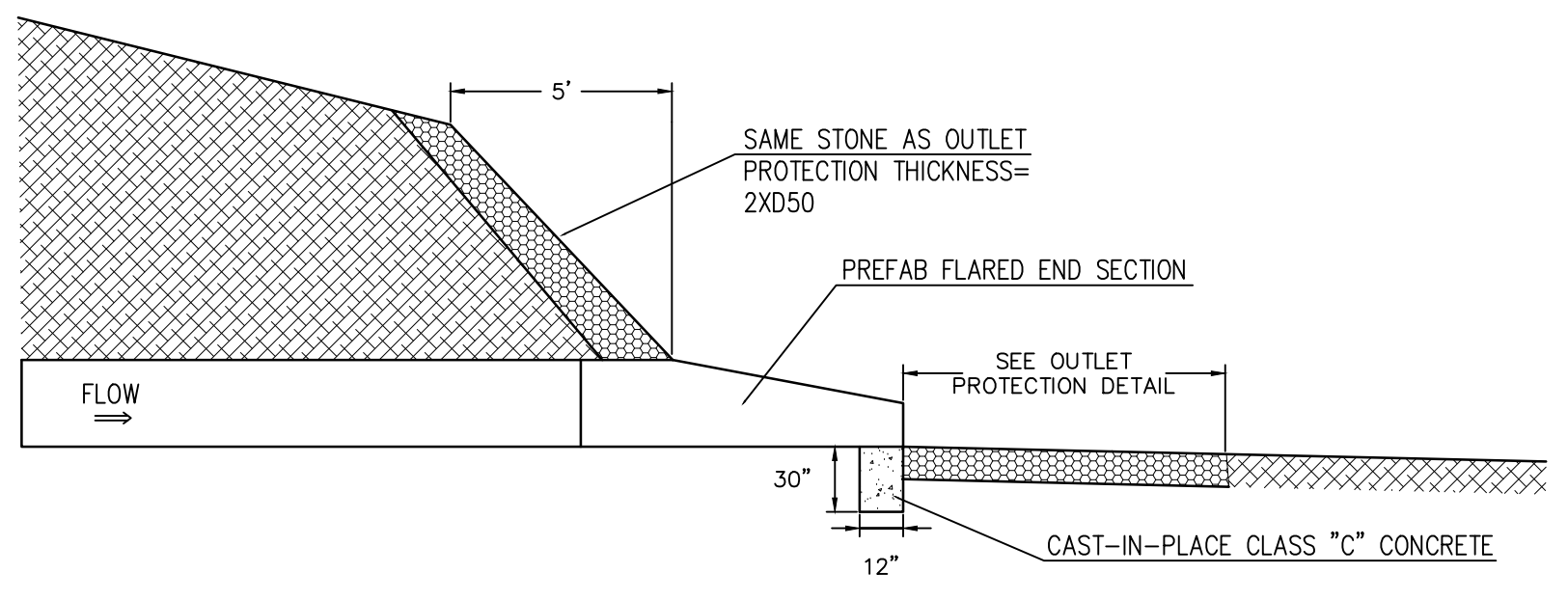
**4" & 6" SERVICE LATERAL AND CLEANOUT DETAIL**  
NOT TO SCALE



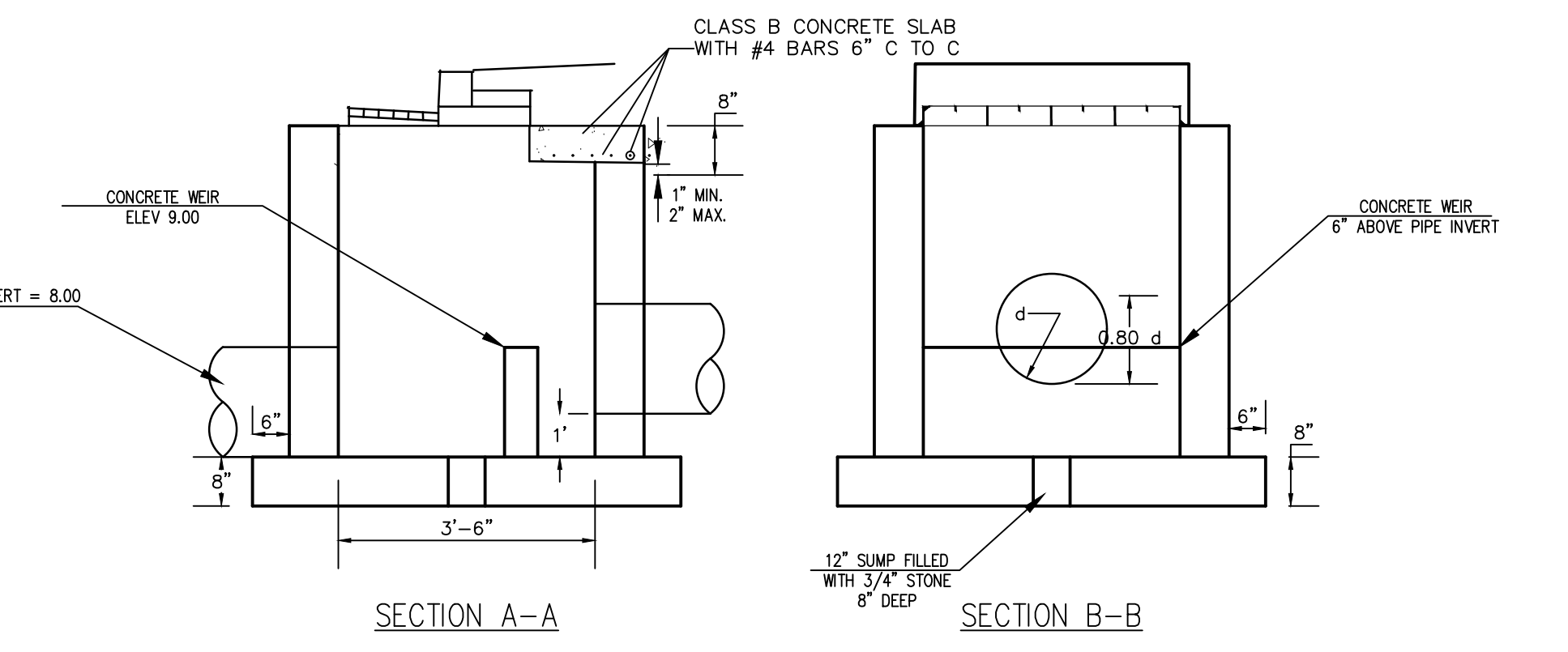
**STORM PIPE BEDDING DETAIL**  
NOT TO SCALE



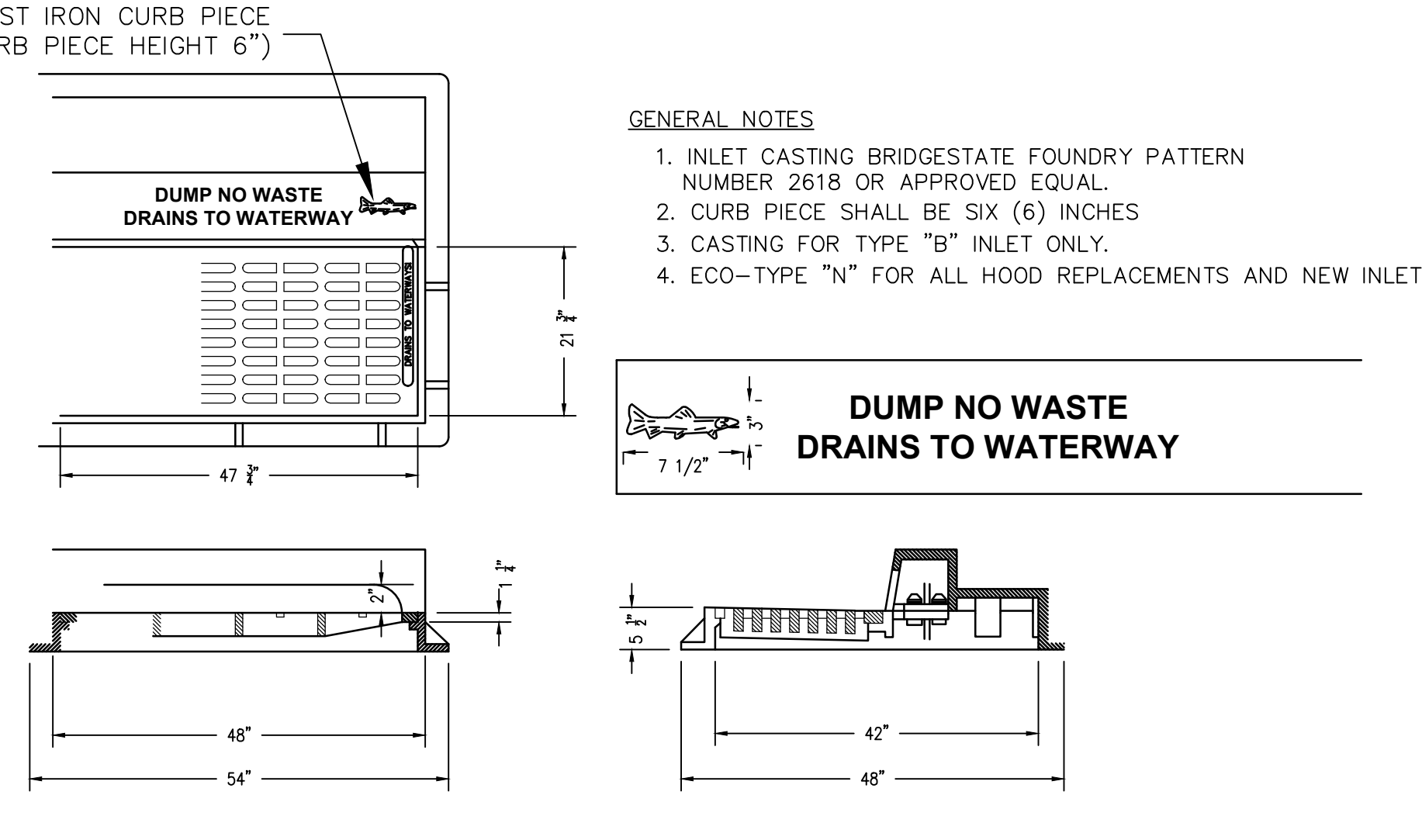
**TYPE "B" INLET**  
NOT TO SCALE



**FLARED END SECTION HEADWALL DETAIL**  
NOT TO SCALE



**INLET #3 - TYPE "B"**  
NOT TO SCALE



**ECO FRIENDLY BICYCLE SAFE GRATE**  
N.T.S.

Job No.	4510	Sheet	Detail
B/O	11	Total	11

Job No.	4510	Sheet	Detail
B/O	11	Total	11

By	RAW
Revisors	RAW
Date	3/30/20
Approved	RAW
Checked	RAW
Drawn	PJW
Designed	RAW

Robert A. Watkins Professional Engineer & Planner New Jersey License No. 45965	Date 3/30/20
Mott Watkins Associates, LLC CONSULTING ENGINEERS & PLANNERS 3120 Fire Road, Suite B201 Egg Harbor Township, New Jersey 08234 Phone: (609) 569-1551 Fax: (609) 569-1521 State Board of Professional Engineers & Land Surveyors Certificate of Authorization No. GA 283208	Date 3/30/20

Middle Township Cape May County	Date 3/30/20
Fairways Major Site Plan - Phase 2B	Date 3/30/20
Construction Details 2	Date 3/30/20
Block 335.01; Lot 5.04	Date 3/30/20