

Property Owners within 200'

LIST OF PROPERTY OWNERS TO BE SERVED NOTICE
PLANNING BOARD
TOWNSHIP OF MIDDLE
31 MECHANIC STREET
CAPE MAY COURT HOUSE, NJ 08210

DATE: August 5, 2018
OWNERS NAME: LANGFORD, FREDERICK

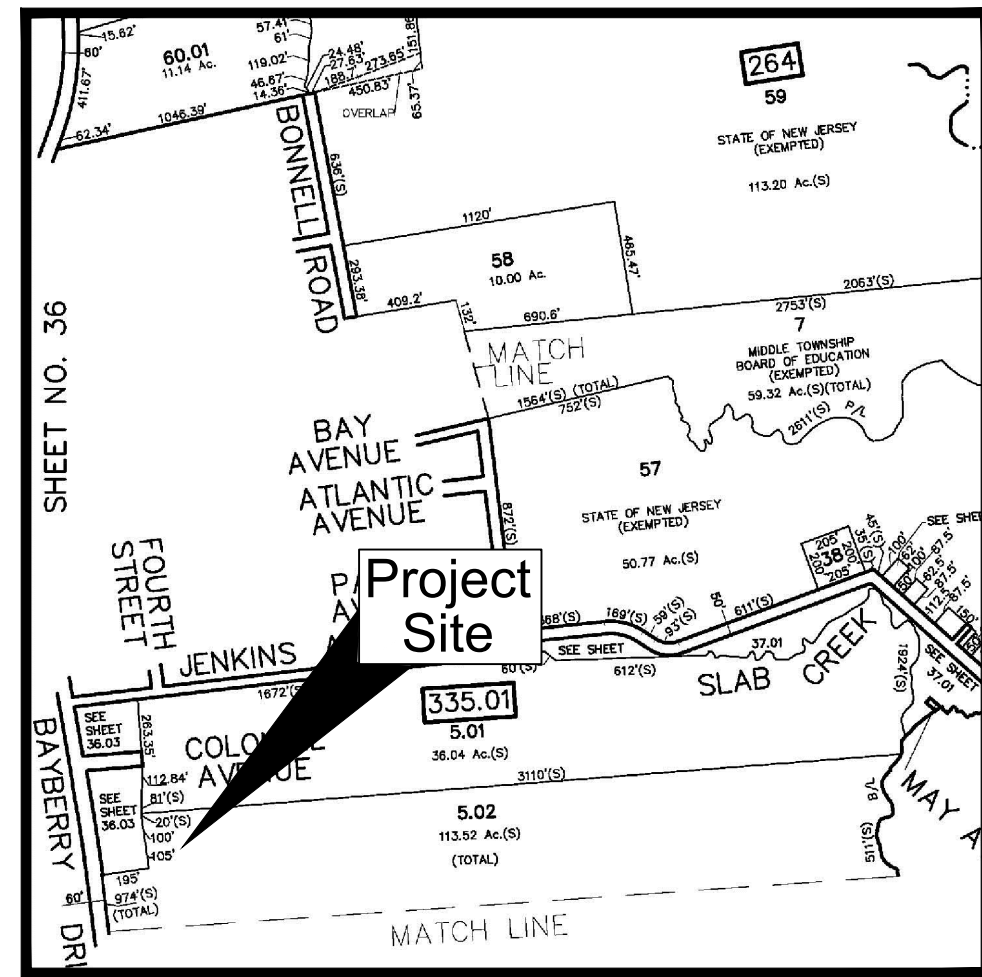
BLOCK: 335.01 LOT: 5.02 & 5.03 PROPERTY LOCATION: 400 BAYBERRY DRIVE

I certify that the following is an accurate and complete list of property owners and addresses. They must be given notice pursuant to the requirements of N.J.S.A. 40:25D-12. This list has been prepared from the most recent tax rolls. (See attached sheets for additional names)

PROPERTY ID	PROPERTY LOCATION	CLASS	OWNER NAME & ADDRESS
335.01 2	204 COLONIAL AVE	2	KOENE, DEANE 204 COLONIAL AVE CAPE MAY COURT HOUSE, NJ 08210
335.01 3	206 COLONIAL AVE	2	YEREMY WAYNE W 206 COLONIAL AVE CAPE MAY COURT HOUSE, NJ 08210
335.01 4	208 COLONIAL AVE	2	QUINE, JAMES 208 COLONIAL AVE CAPE MAY COURT HOUSE, NJ 08210
335.01 5.02	211 COLONIAL AVE	1	LANGFORD, FREDERICK 212 CREST RD CAPE MAY COURT HOUSE, NJ 08210
335.01 5.02	400 BAYBERRY DRIVE	4A	LANGFORD, FREDERICK 212 CREST RD CAPE MAY COURT HOUSE, NJ 08210
335.01 5.02	100 BAY BREEZE BLVD	2	SCOTT, MICHAEL J & CYNTHIA R 100 BAY BREEZE BLVD CAPE MAY COURT HOUSE, NJ 08210
335.01 5.02	102 BAY BREEZE BLVD	2	CHAL, MICHAEL S & MARGARET M 102 BAY BREEZE BLVD CAPE MAY COURT HOUSE, NJ 08210
335.01 5.02	104 BAY BREEZE BLVD	2	ROGSON, PAUL J & MARY L ROTHWELL 104 BAY BREEZE BLVD CAPE MAY COURT HOUSE, NJ 08210
335.01 5.02	106 BAY BREEZE BLVD	2	SINK, ELIZABETH T 106 BAY BREEZE BLVD CAPE MAY COURT HOUSE, NJ 08210
335.01 5.02	108 BAY BREEZE BLVD	2	CASULLA, TIMOTHY T & SUZANNE M 2119 WESTWOOD COURT 800 HARBOR CITY NJ 08215

335.01 5.02	201 BAY BREEZE BLVD	2	DOBOSKI, MAURIN F & FORTHEIMER, D 201 BAY BREEZE BLVD CAPE MAY COURT HOUSE, NJ 08210
335.01 5.02	203 BAY BREEZE BLVD	2	DALE, JAMES & DENISE 203 BAY BREEZE BLVD LIBURY, VA 22815
335.01 5.02	205 BAY BREEZE BLVD	2	SEEBERRY, WAYNE F & CHRISTINA L 205 BAY BREEZE BLVD CAPE MAY COURT HOUSE, NJ 08210
335.01 5.02	207 BAY BREEZE BLVD	2	CONSTANTINO, FRED & HEANRIS 207 BAY BREEZE BLVD CAPE MAY COURT HOUSE, NJ 08210
335.01 5.02	209 BAY BREEZE BLVD	2	HANVAY, CHRISTOPHER M & BARBARA C 209 BAY BREEZE BLVD CAPE MAY COURT HOUSE, NJ 08210
335.01 5.02	211 BAY BREEZE BLVD	2	SMITH, CAROL M 211 BAY BREEZE BLVD CAPE MAY COURT HOUSE, NJ 08210
335.01 5.02	213 BAY BREEZE BLVD	2	MEKARSK, DOROTHY V 213 BAY BREEZE BLVD CAPE MAY COURT HOUSE, NJ 08210
335.01 5.02	200 BAY BREEZE BLVD	2	WOLSHIRE, TODD W & ALISON A 200 BAY BREEZE BLVD CAPE MAY COURT HOUSE, NJ 08210
335.01 5.02	202 BAY BREEZE BLVD	2	BLUETT, RICHARD H & JANE M 1877 WALLEY FORD RD ALLENTOWN, PA 18104
335.01 5.02	204 BAY BREEZE BLVD	2	BRUNNENR, SARAH 204 BAY BREEZE BLVD CAPE MAY COURT HOUSE, NJ 08210
335.01 5.02	206 BAY BREEZE BLVD	2	BUCKLEY, BRIAN J & GAIL M 206 BAY BREEZE BLVD CAPE MAY COURT HOUSE, NJ 08210
335.01 5.02	208 BAY BREEZE BLVD	2	CARROLL, MICHAEL A & DONNA L 208 BAY BREEZE BLVD CAPE MAY COURT HOUSE, NJ 08210
335.01 5.02	210 BAY BREEZE BLVD	2	LEFFERT, DAVID J 210 BAY BREEZE BLVD CAPE MAY COURT HOUSE, NJ 08210
335.01 5.02	301 BAY BREEZE BLVD	1	BENCOSETTI LLC 301 BAY BREEZE BLVD CAPE MAY COURT HOUSE, NJ 08210
335.01 5.02	303 BAY BREEZE BLVD	1	AQUILINO, CHRISTOPHER G ETAL TRUSTEES 303 BAY BREEZE BLVD CAPE MAY COURT HOUSE, NJ 08210

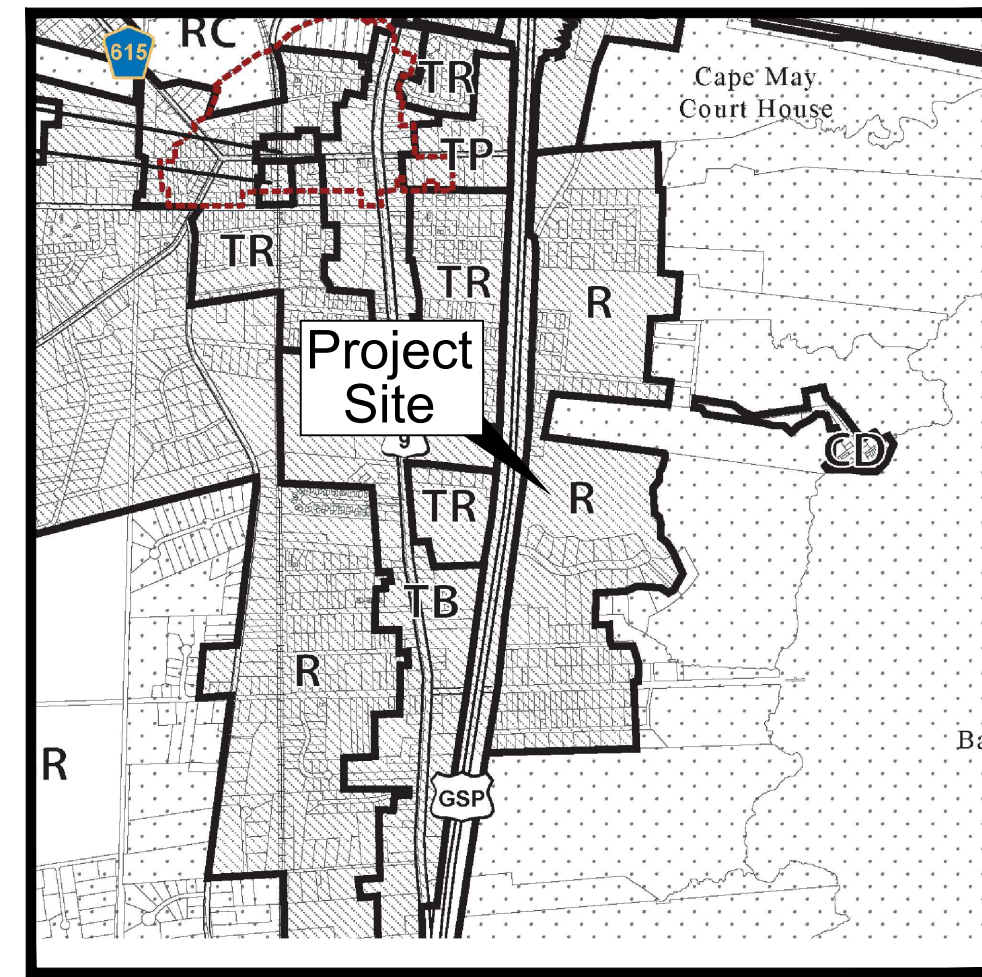
335.01 5.02	305 BAY BREEZE BLVD	1	TERASHA, RONALD W JR & LYNDA M 11 TERESA BETHUNE COURT BALDWIN, MD 21113
335.01 5.02	307 BAY BREEZE BLVD	1	SCHWARTZBERG, MICHAEL & HUSTON, N 11 FOREST LAKE BEDDOWATER, NJ 08207
335.01 5.02	309 BAY BREEZE BLVD	1	FERRAZ, PETER G 309 BAY BREEZE BLVD CAPE MAY COURT HOUSE, NJ 08210
335.01 5.02	311 BAY BREEZE BLVD	1	FARLEY, GEORGE T & DONNA L 311 BAY BREEZE BLVD PLYMOUTH, MI 48179
335.01 5.02	300 BAY BREEZE BLVD	2	HANSEN, STEPHEN P & LEE, J R 191 FOREST LAKE MIDDLETOWN, NJ 08055
335.01 5.02	302 BAY BREEZE BLVD	2	LIAPKOVIC, ELINA 302 BAY BREEZE BLVD CAPE MAY COURT HOUSE, NJ 08210
335.01 5.02	304 BAY BREEZE BLVD	2	CALABALLO, ELVIN & ANA M 304 BAY BREEZE BLVD CAPE MAY COURT HOUSE, NJ 08210
335.01 5.02	306 BAY BREEZE BLVD	2	JAMES, RICHARD J 306 BAY BREEZE BLVD CAPE MAY COURT HOUSE, NJ 08210
335.01 5.02	308 BAY BREEZE BLVD	2	AGOSTINI, FRED & ANNE B 308 BAY BREEZE BLVD CAPE MAY COURT HOUSE, NJ 08210
335.01 5.02	310 BAY BREEZE BLVD	2	HUGHES, EDWARD T & MARTINA M 310 BAY BREEZE BLVD CAPE MAY COURT HOUSE, NJ 08210
335.01 5.02	312 BAY BREEZE BLVD	2	MICHELLE, JAMES W & ANNE M 312 BAY BREEZE BLVD CAPE MAY COURT HOUSE, NJ 08210
335.01 5.02	401 BAY BREEZE BLVD	1	ROLAND, THERESA M 401 BAY BREEZE BLVD CAPE MAY COURT HOUSE, NJ 08210
335.01 5.02	403 BAY BREEZE BLVD	1	HANSEN, ROBERT D & PATRICIA K 403 BAY BREEZE BLVD CAPE MAY COURT HOUSE, NJ 08210
335.01 5.02	405 BAY BREEZE BLVD	1	MC BURGAN, KATHLEEN M 405 BAY BREEZE BLVD CAPE MAY COURT HOUSE, NJ 08210
335.01 5.02	407 BAY BREEZE BLVD	1	OSMENTINO, PHILIP E & KATHLEEN G 344 FOX HILL DRIVE CHAMBERSBURG, PA 17002



Township of Middle Tax Map

Tax Map

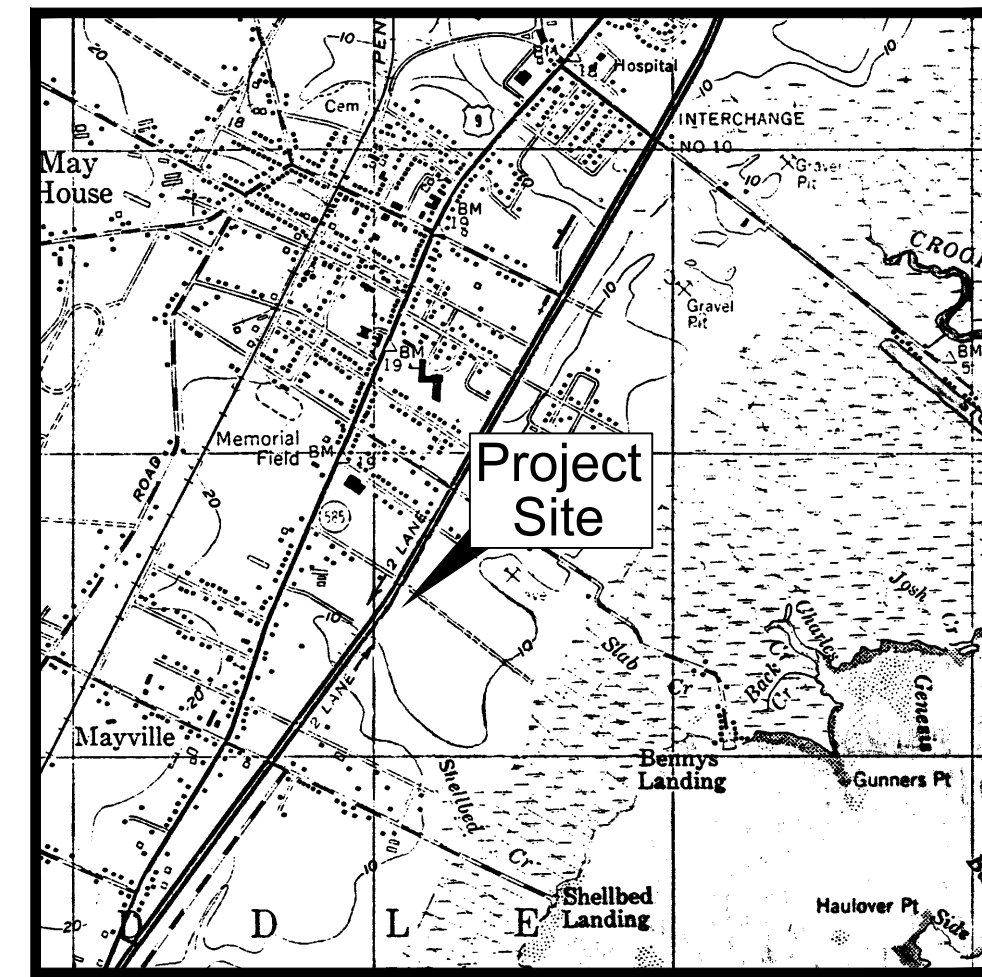
N.T.S.



Township of Middle Zoning Map

Zoning Map

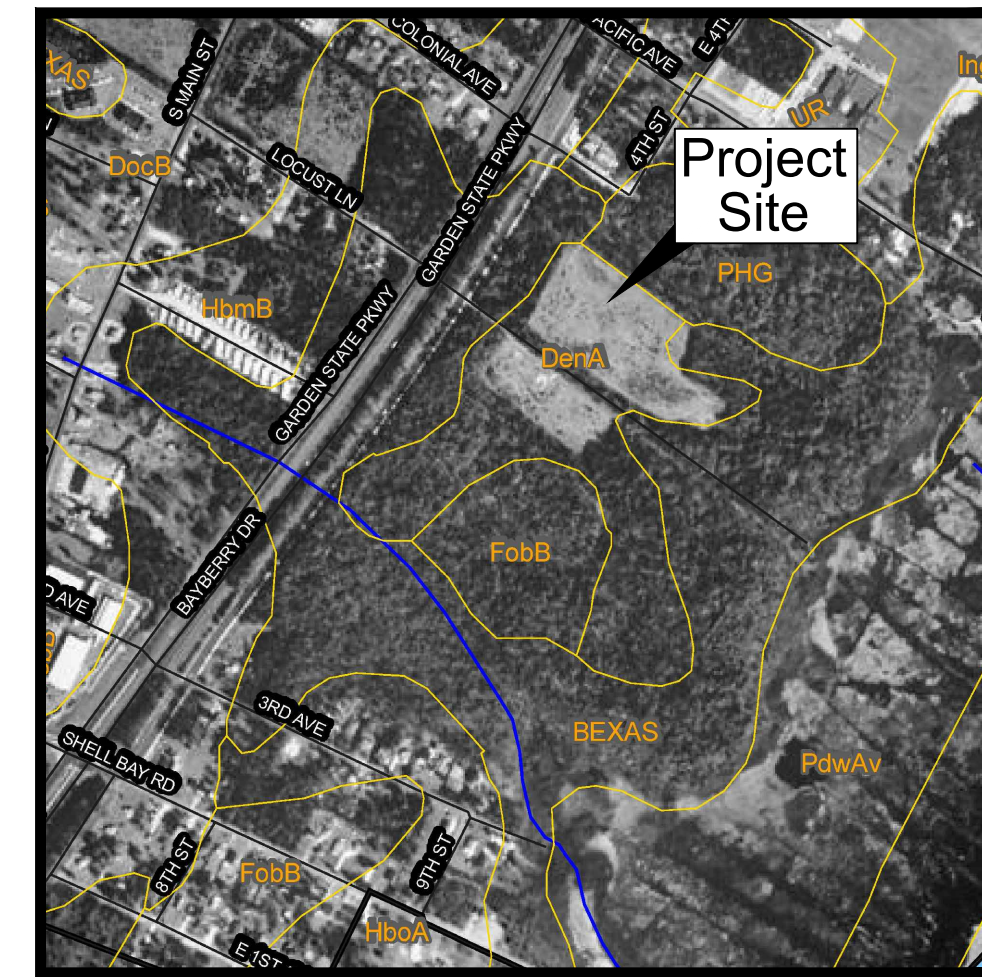
N.T.S.



USGS Quadrangles "Rio Grande" & "Stone Harbor"

Quad Map

1" = 2,000'



Cape May County Soil Survey - Sheet 23

Soils Map

1" = 1,667'

THE FAIRWAYS MAJOR SITE PLAN

PHASE 2B

Block 335.01 Lot 5.04

Township of Middle Cape May County, New Jersey

Index of Drawings	
Sheet	Description
1	Cover Sheet
2	Existing Site Conditions
3	Site Plan Overall (100' Scale)
4	Site Plan 1 (30' Scale)
5	Grading Plan
6	Landscaping & Utility Plan
7	Proposed Sewer Profile
8	Soil Erosion Plan
9	SECS Details
10	Construction Details 1
11	Construction Details 2

General Notes

- SITE:** Property is known as Block 335.01, Lot 5.04 as shown on Sheet 37 of the Tax Map of the Township of Middle.
- OWNER/APPLICANT:** Black Lagoon Golf Course c/o Fred Langford
212 Crest Road
Cape May Court House, New Jersey 08210
- ZONE:** R (Residential)
- EXISTING USE:** Approved 12 townhouse units on Mallard Pond Lane.
- PROPOSED USE:** Construction of 13 additional townhouse units on Lot 5.04.

MOTT WATKINS ASSOCIATES, LLC
CONSULTING ENGINEERS & PLANNERS

3120 Fire Road, Suite B201
Egg Harbor Township, New Jersey 08234
(609) 569-1551

State Board of Professional Engineers & Land Surveyors
Certificate of Authorization No. GA 283208

335.01 5.02	409 BAY BREEZE BLVD	1	BROWN, MICHAEL D 409 BAY BREEZE BLVD CAPE MAY COURT HOUSE, NJ 08210
335.01 5.02	411 BAY BREEZE BLVD	1	SAVITZ, EDWARD L & TRINIC C 411 BAY BREEZE BLVD CAPE MAY COURT HOUSE, NJ 08210
335.01 5.02	413 BAY BREEZE BLVD	1	ANDRUSO, FRANK JR & GAIL T 106 BALLESTON LAKE RD BALLETSON LAKE, NY 12519
335.01 5.02	408 BAY BREEZE BLVD	1	REBER, MARGARET W 408 BAY BREEZE BLVD CAPE MAY COURT HOUSE, NJ 08210
335.01 5.02	402 BAY BREEZE BLVD	1	MAHER, ILLIAM M 402 BAY BREEZE BLVD CAPE MAY COURT HOUSE, NJ 08210
335.01 5.02	404 BAY BREEZE BLVD	1	KORDAN, ROBERT V & MARGUERITE M 1472 BRANNON COURT LAKE OREGON, OR 97033
335.01 5.02	406 BAY BREEZE BLVD	1	HOPKINS, DOUGLAS F & PAULA 406 BAY BREEZE BLVD CAPE MAY COURT HOUSE, NJ 08210
335.01 5.02	408 BAY BREEZE BLVD	1	MASTRANDRO, BABY D & FRANCES T 408 BAY BREEZE BLVD CAPE MAY COURT HOUSE, NJ 08210
335.01 5.02	410 BAY BREEZE BLVD	1	JACOBS, LOIS N TRUSTEE 410 BAY BREEZE BLVD CAPE MAY COURT HOUSE, NJ 08210
335.01 5.02	412 BAY BREEZE BLVD	1	BILOTTA, ANTHONY T & PATRICIA A 412 BAY BREEZE BLVD CAPE MAY COURT HOUSE, NJ 08210
335.01 5.02	300 BAYBERRY DRIVE	3	CLARKE, SARAH F 300 BAYBERRY DRIVE CAPE MAY COURT HOUSE, NJ 08210
335.01 5.02	201 COLONIAL AVE	1	MORTON, GEORGE D & DIANE C 300 1/2 RD AVE NORTH WILWOOD, NJ 08240
335.01 5.02	300 BAYBERRY DRIVE	2	COLLETTI, LEBARD F ETAL 300 BAYBERRY DRIVE CAPE MAY COURT HOUSE, NJ 08210
335.01 5.02	304 BAYBERRY DRIVE	2	BIXBY, RICHARD & MARY V 304 BAYBERRY DRIVE CAPE MAY COURT HOUSE, NJ 08210
335.01 5.02	306 BAYBERRY DRIVE	2	COBRADO, STEPHEN V & JULIJA BERBERNA M 306 BAYBERRY DRIVE CAPE MAY COURT HOUSE, NJ 08210

339 2	401 3RD AVE	3	LEONIS, THOMAS G 401 3RD AVE CAPE MAY COURT HOUSE, NJ 08210
336.01 40	8 SHELLBAY AVE	15C	STATE OF NJ DEPT OF ENV PROTECTION 401 E STATE ST TRENTON, NJ 08625
	NO GARDEN STATE PARKWAY		NJ THRUWAY AUTHORITY CORP 811 MAIN ST WOODBRIDGE, NJ 07091
	BAYBERRY DRIVE COLONIAL AVE 300 BAYBERRY DRIVE BAY BREEZE LANDFORD BLVD		TOWNSHIP OF MIDDLE 31 MECHANIC STREET CAPE MAY COURT HOUSE, NJ 08210

Township of Middle

Chairman	Date
Secretary	Date
Township Engineer	Date

Robert A. Watkins
Professional Engineer & Land Surveyor
New Jersey License No. 4586500