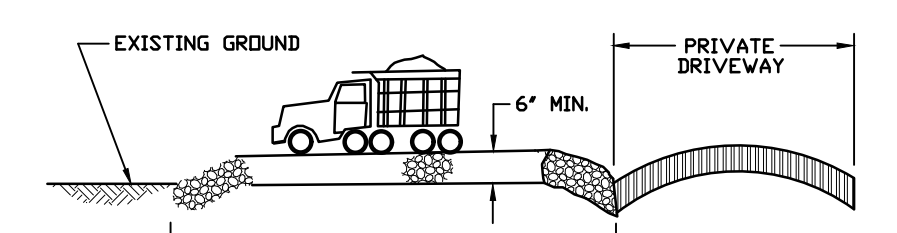
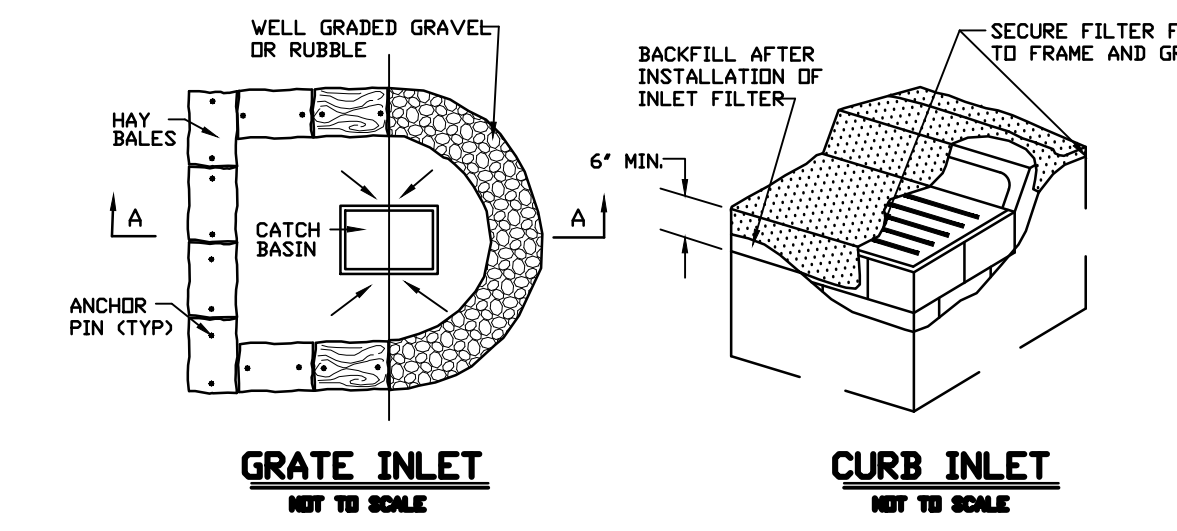


- HAY BALE FILTER DETAIL**
 NOT TO SCALE
- 4" VERTICAL FACE
 TWO (2) 2"x3"x3'-0" WOOD STAKES PER BALE.
 FIT BALE TIGHT TO PRECEDING BALE.
 CONSTRUCTION SPECIFICATIONS
1. BALES SHALL BE PLACED IN A ROW WITH ENDS TIGHTLY ABUTTING THE ADJACENT BALES.
 2. EACH BALE SHALL BE EMBEDDED IN THE SOIL A MINIMUM OF 4".
 3. BALES SHALL BE SECURELY ANCHORED IN PLACE BY STAKES OR REBARS. ANGLE FIRST STAKE TOWARD PRECEDING BALE.
 4. INSPECTION SHALL BE FREQUENT; REPAIR OR REPLACE AS NECESSARY.
 5. BALES TO BE REMOVED AFTER INSTALLATION OF STORM SYSTEM SO AS NOT TO BLOCK OR IMPEDE DRAINAGE.

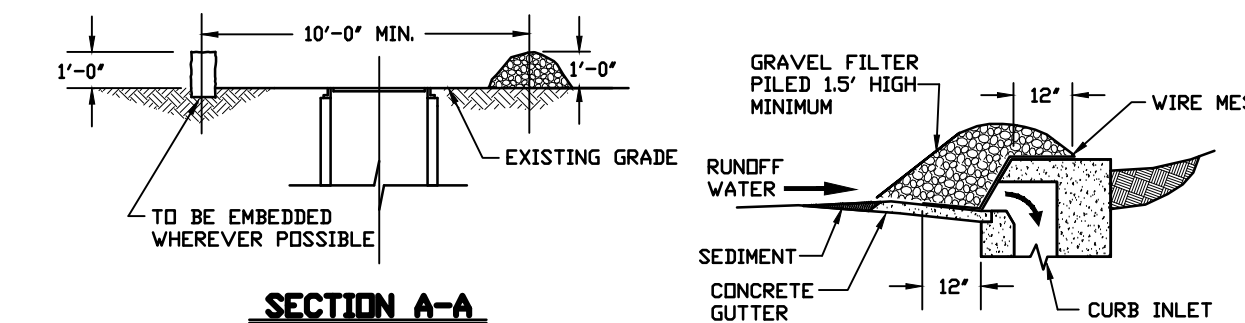


STABILIZED CONSTRUCTION ENTRANCE DETAIL
 NOT TO SCALE



GRATE INLET
 NOT TO SCALE

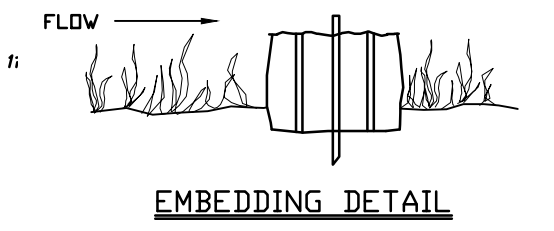
CURB INLET
 NOT TO SCALE



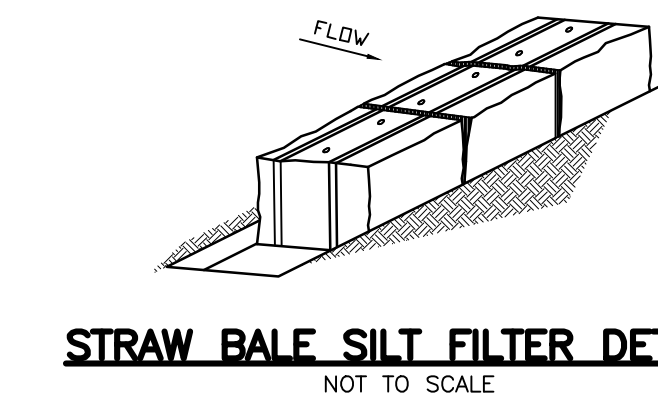
SECTION A-A

1. CONTRACTOR IS TO CLEAN INLET FILTER AFTER EVERY STORM.
2. CONTRACTOR TO REMOVE FABRIC JUST PRIOR TO PAVING.

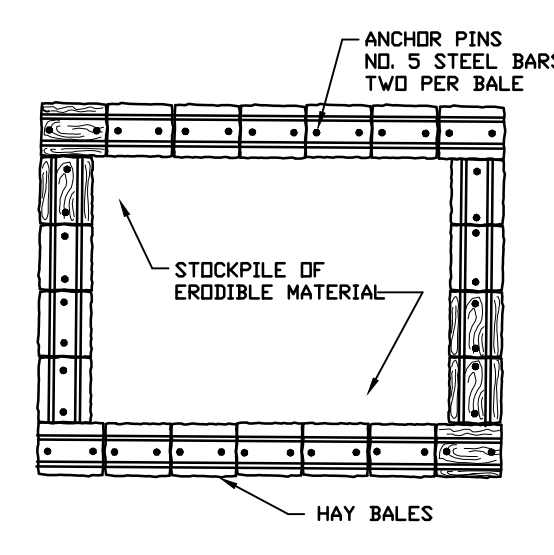
CATCH BASIN FILTER DETAIL
 NOT TO SCALE



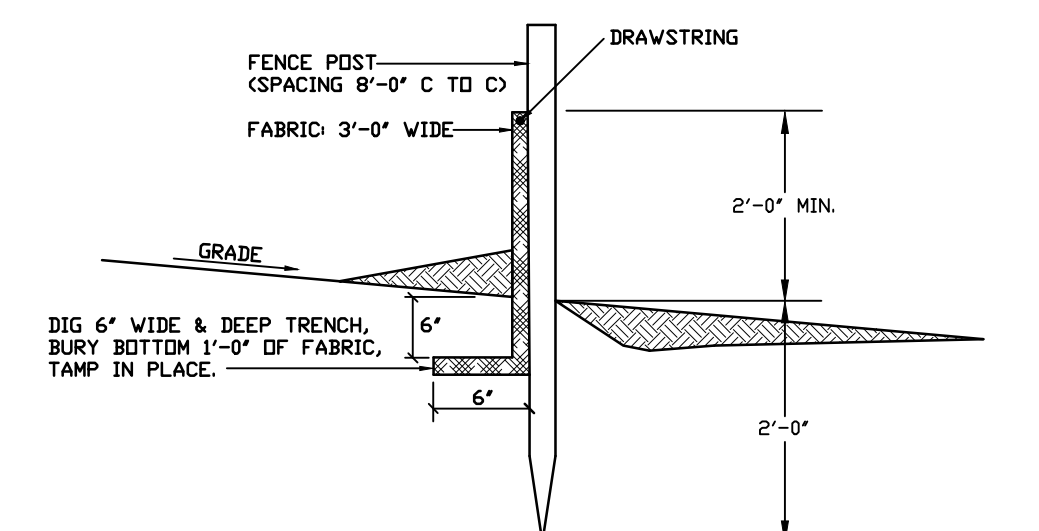
EMBEDDING DETAIL



STRAW BALE SILT FILTER DETAILS
 NOT TO SCALE

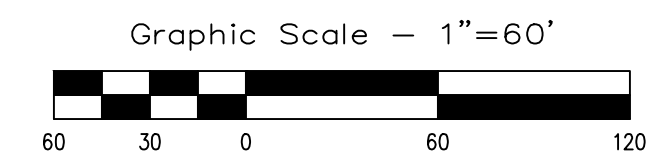


MATERIAL STOCKPILE DETAIL
 NOT TO SCALE



SILT FENCE DETAIL
 NOT TO SCALE

NOTE:
 AT THE COMPLETION OF THE PROJECT AND AFTER SOIL STABILIZATION AND VEGETATIVE GROWTH HAVE BEEN ASSURED, THE SILT FENCE MUST BE COMPLETELY REMOVED AND THE EMBEDMENT TRENCH RESTORED TO A NATURAL CONDITION.



By										
Revisors										
Date										
Date	3/30/20	RAW	RAW	RAW	RAW	RAW	RAW	RAW	RAW	
Checked										
Drawn	PJW									
Designed	RAW									
Professional Engineer & Planner	Robert A. Watkins									
Professional License No. 45865	New Jersey License No. 45865									
Consulting Engineers & Planners	MOTT WATKINS ASSOCIATES, LLC									
3120 Fire Road, Suite B201	Egg Harbor Township, New Jersey 08234									
Phone: (609) 569-1551	Fax: (609) 569-1521									
State Board of Professional Engineers & Land Surveyors	Certificate of Authorization No. GA 283208									
Job No.	4510	Sheet	SOIL							
B/O	8	Total	11							